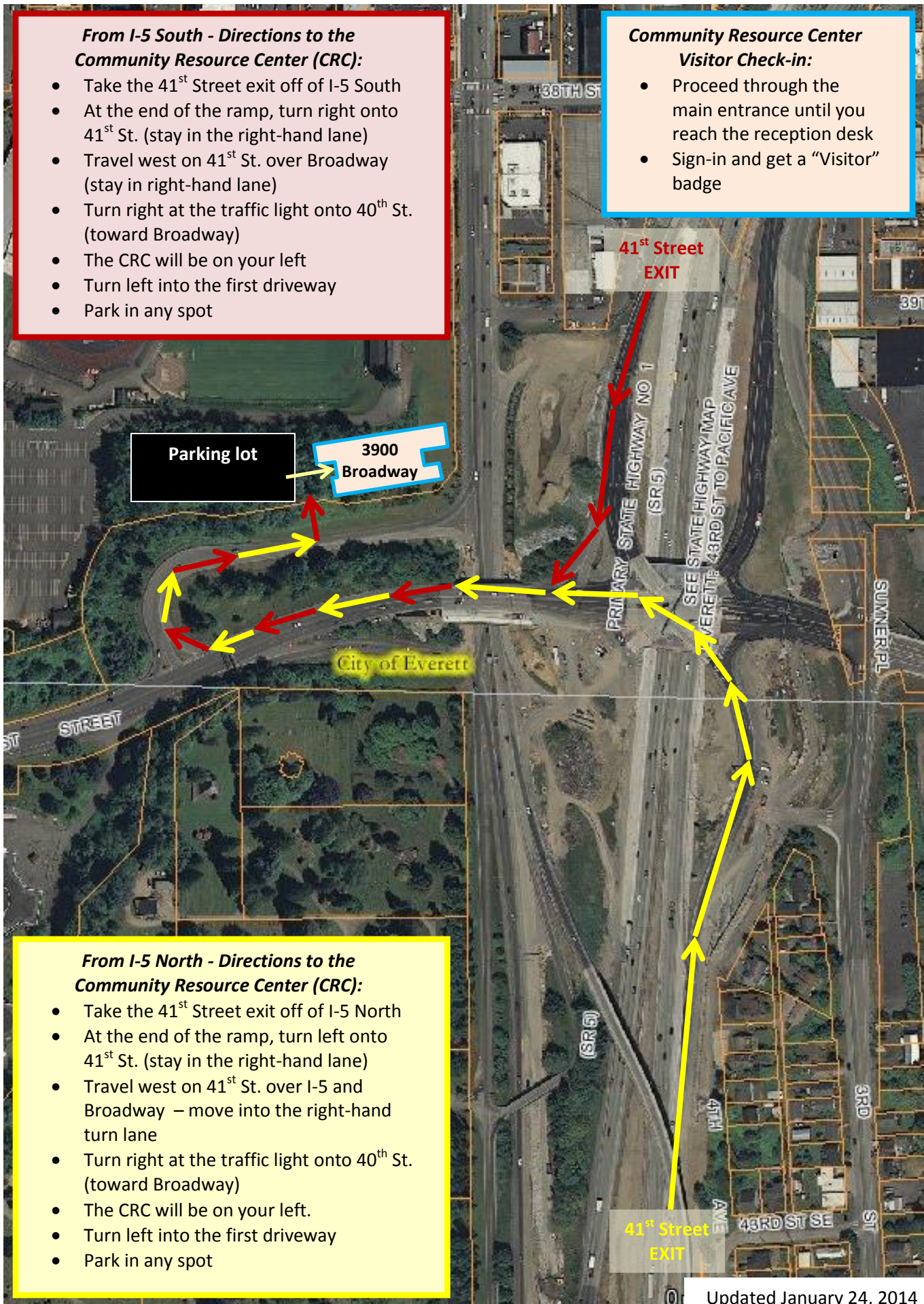


From I-5 South - Directions to the Community Resource Center (CRC):

- Take the 41st Street exit off of I-5 South
- At the end of the ramp, turn right onto 41st St. (stay in the right-hand lane)
- Travel west on 41st St. over Broadway (stay in right-hand lane)
- Turn right at the traffic light onto 40th St. (toward Broadway)
- The CRC will be on your left
- Turn left into the first driveway
- Park in any spot

Community Resource Center Visitor Check-in:

- Proceed through the main entrance until you reach the reception desk
- Sign-in and get a "Visitor" badge



From I-5 North - Directions to the Community Resource Center (CRC):

- Take the 41st Street exit off of I-5 North
- At the end of the ramp, turn left onto 41st St. (stay in the right-hand lane)
- Travel west on 41st St. over I-5 and Broadway – move into the right-hand turn lane
- Turn right at the traffic light onto 40th St. (toward Broadway)
- The CRC will be on your left.
- Turn left into the first driveway
- Park in any spot