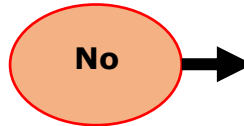
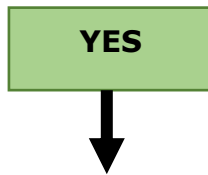


# Questions for Deciding to Enroll for College Credit

**Can you use this course credit at the college you want to go to for a degree  
—Associate's (2 year degree) or Bachelor's (4 year degree)?**

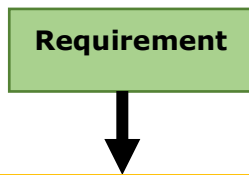
if the credit is coming from a college OTHER than the degree college, find out if the course "counts" by googling "transfer equivalency" and the name of the degree college. It will give you a list of what course credits are accepted and what those credits "count" for.



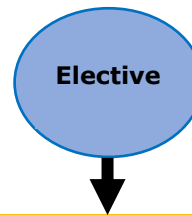
You're doing college level work; there's no benefit in paying extra for it. But if tuition is waived or free, maybe—just as a trial run.

**Does that course credit "count" as an elective OR toward a requirement for your degree?**

Transfer Equivalency at your degree college may or may NOT accept course credit if you ALSO are transferring AP exam credit—double check both!



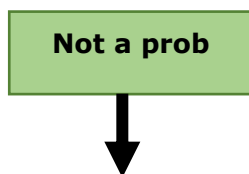
Frees up space to take other courses you'll need. Helps finish your degree faster. Adds to total to "move you up" in registration priority. That's a plus!



Helps finish a degree faster. Adds to total to "move you up" in registration priority. Good enough?

**Does transferring the course credit mean you jump to a more advanced course?**

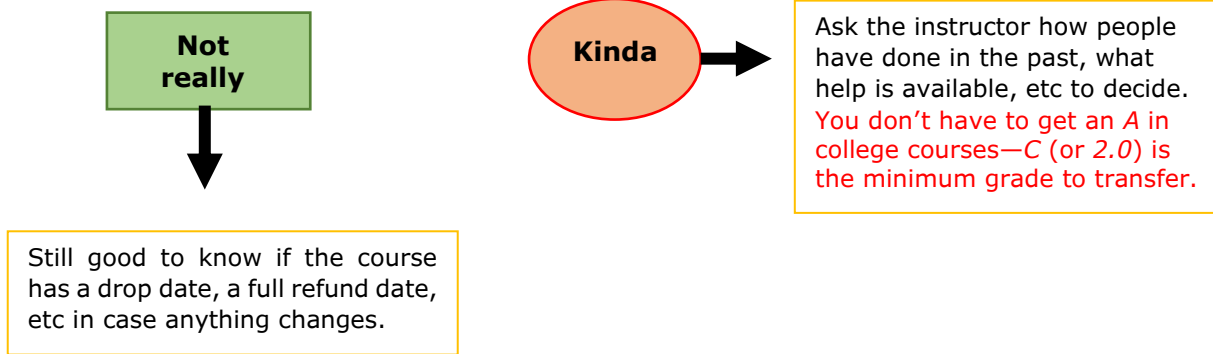
If both, say, Math 101 and 102 are required for your degree—you taking/transferring in 101 credit means you have to go into 102 with other students who took 101 at the college (and professors who assume you did, too) where they learned what *that college's* 101 course taught. Alumni report that this can be tough!



May not be worth it; treat it as great practice for the course you'll take in college instead! See\* below.

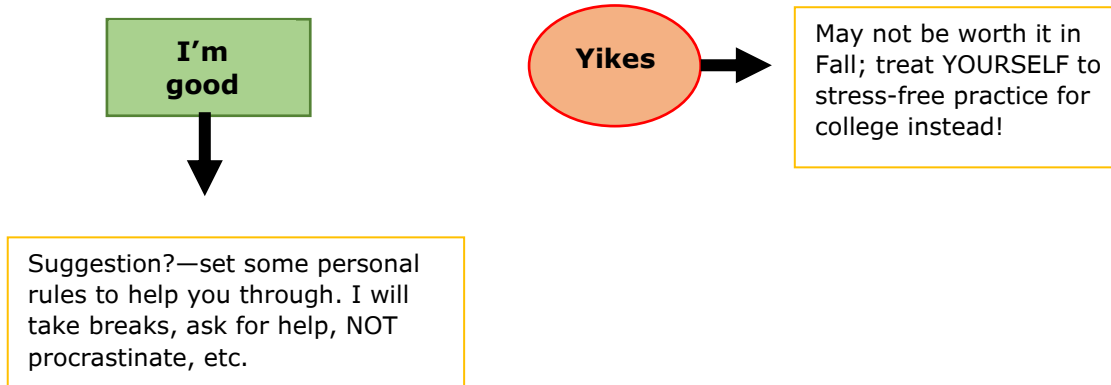
**Are you worried you'll get a low grade on your college transcript?**

\*You have the choice of which, if any, course credits/AP exam credits you wish to transfer when you enroll in your degree college. You are only “stuck” with the course credit and grade if the credits come from your degree college.



**Are you setting yourself up for more stress/work than is good for you?**

Be honest with yourself. Especially Fall semester of your senior year with applications, you carry a huge extra load—do you really have the time and mental/emotional space to add a course like this to your plate?



Want more info on deciding and enrolling?

UW's site is: <https://www.uwhs.uw.edu/> and to talk directly to someone about it [uwhs@uw.edu](mailto:uwhs@uw.edu)

Everett Community College's is: <https://www.everettcc.edu/ccec/college-in-high-school/students-parents-info> and to talk directly to someone about it [advising@everettcc.edu](mailto:advising@everettcc.edu)