

Avoid These Common Mistakes When Making Your Blanket



↑ #1 Rule: Cut off the 2 Selvage Ends FIRST!



↑ Rule #2 Cut off the Selvage Ends before cutting fringe.



↑ Knots are too loose, making holes in blanket.



↑ Knots are too short and too wide (hard to knot & bulky)



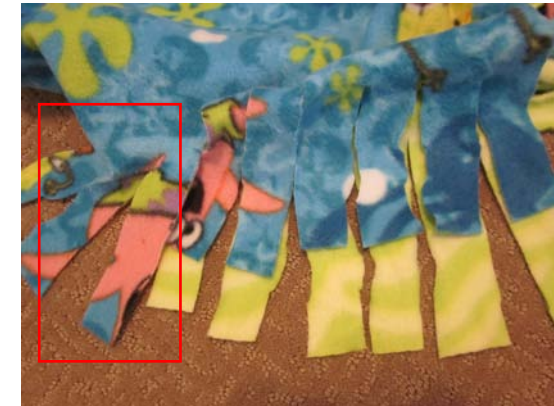
↑ Did we say "Cut off the selvage FIRST." Often, the fringe becomes too short if you cut it off after you tie knots.



↑ Fringe cut with dull or paper scissors.



↑ Uneven fringe lengths.



↑ When making a double-layer blanket, cut both pieces at the same time or they won't line up. (In this photo there are 3 blue fringes w/o green "partners.")



Corners cut improperly, leaving holes in corners



Same blanket, another corner.



Improperly cut corners



Very ragged edges from a dull scissors.



This was either the stitching at the end of the bolt or a store-bought blanket. This edge should have been cut off first (like selvage). We don't accept store-bought blankets.