

CTE Career Pathway Readiness Opportunities



Energy & Sustainability



High School courses

Career and Technical Education (CTE) courses integrate rigor in academics, and career and leadership skills.

Industry certifications (professional cert) are noted with*

Dual credit (college credit) courses are noted with **

Core Courses

Biology and the Environment

Chemistry

Exploratory Courses

Advanced Courses

AP Environmental Science (9th-12th)

AP Biology

AP Chemistry

AP Capstone: Research in Science and Engineering

Skill Center Courses



Career and Technical Student Organizations (CTSOs)

CTSOs are part of all CTE courses. Students can explore careers, and practice their skills through competition at local, regional and national levels through after school programs.

- ☰ Technology Student Association (TSA)
- ☰ Future Farmers of America (FFA)
- ☰ Environthon - Snohomish County



Work based learning

These are learning experiences that provide career guidance and exploration: job shadows, internships, apprenticeships, community speakers, field trips and jobs.

- ☰ Energy and Sustainability Internship

For more information regarding Everett Public Schools Career Pathways, please contact your high school's career specialist and counselors. Visit the CTE web page on: Everettsd.org

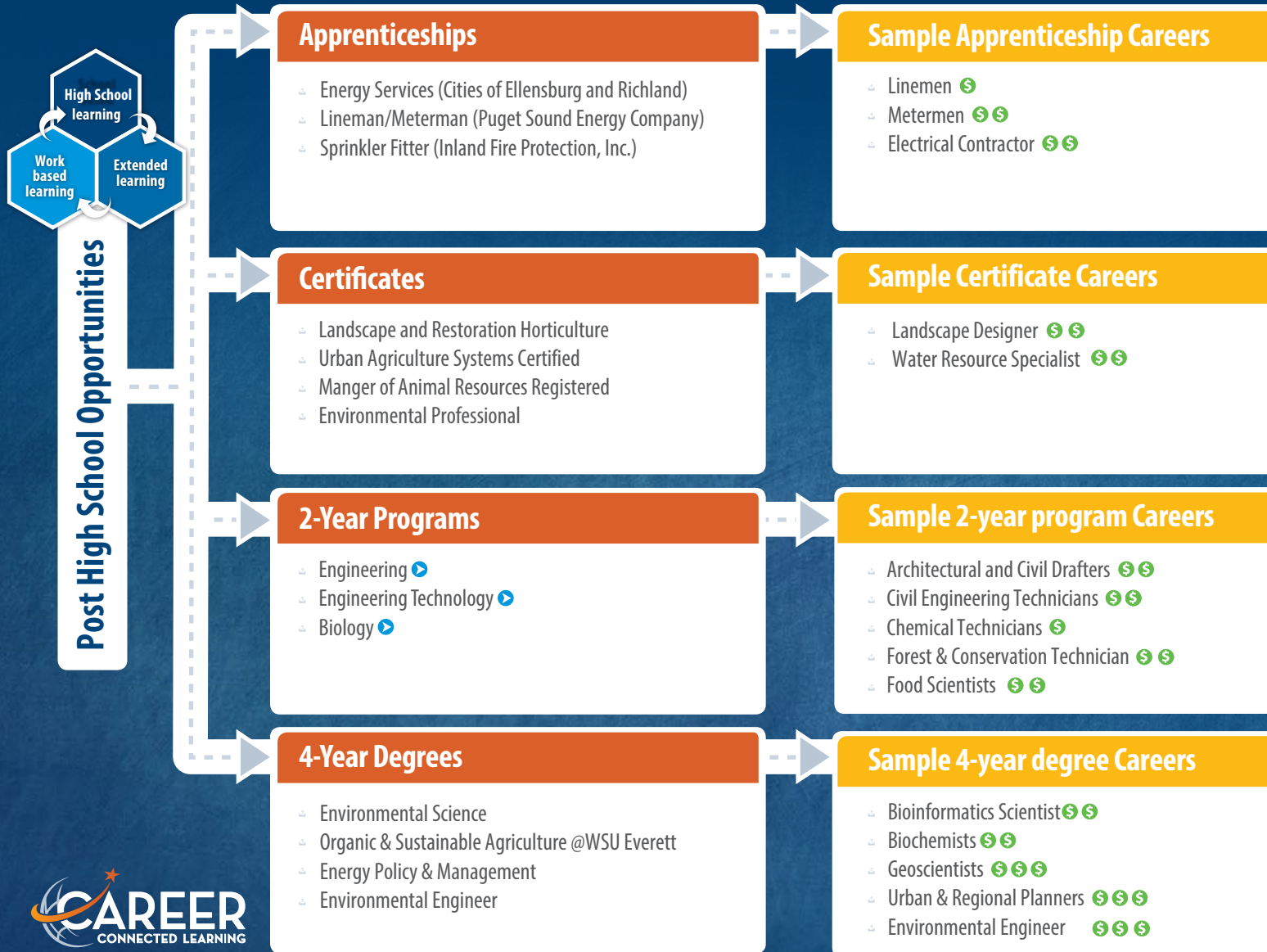
Document updated: Dec. 2020



Pathways to Energy & Sustainability Careers



The Energy and Sustainability pathway will help you understand environmental management, prepare you for careers that promote environmentally friendly practices, energy production, research and more. This path is for you, if you want to make a positive impact on the environment, people's quality of life and future generations.



SKILLS

- Planning skills
- Identifying problems
- Strong math & science skills
- Strong reading skills
- Interest in environmental
- Interest in environmental science

TRANSFER

▶ = Transfer degree only

SALARIES

- \$ = Max \$25/hr
- \$\$ = Max \$26-40/hr
- \$\$\$ = Max > \$40/hr

For more information regarding Everett Public Schools Career Pathways, please contact your high school's career specialist and counselors.

Visit the CTE web page on: Everettsd.org

Document updated: Dec. 2020