

# Hot Cross Buns

B A G B A G G G G G A A A A B A G

# Gently Sleep (Suo Gan)

G A B A G A G A B A B G

G A B A G A G A B A B G

# Au Clair de la Lune

Musical notation for the first line of 'Au Clair de la Lune'. The staff is in treble clef, key of D major (one sharp), and 4/4 time. The notes are: G4 (quarter), G4 (quarter), G4 (quarter), A4 (quarter), B4 (half), A4 (half), G4 (quarter), B4 (quarter), A4 (quarter), A4 (quarter), G4 (half).

G G G A B A G B A A G

Musical notation for the second line of 'Au Clair de la Lune'. The staff is in treble clef, key of D major (one sharp), and 4/4 time. The notes are: G4 (quarter), G4 (quarter), G4 (quarter), A4 (quarter), B4 (half), A4 (half), G4 (quarter), B4 (quarter), A4 (quarter), A4 (quarter), G4 (half).

G G G A B A G B A A G

# Merrily We Roll Along

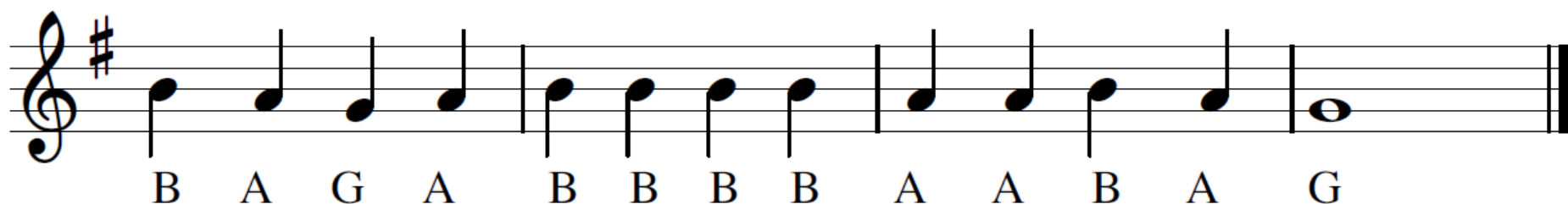
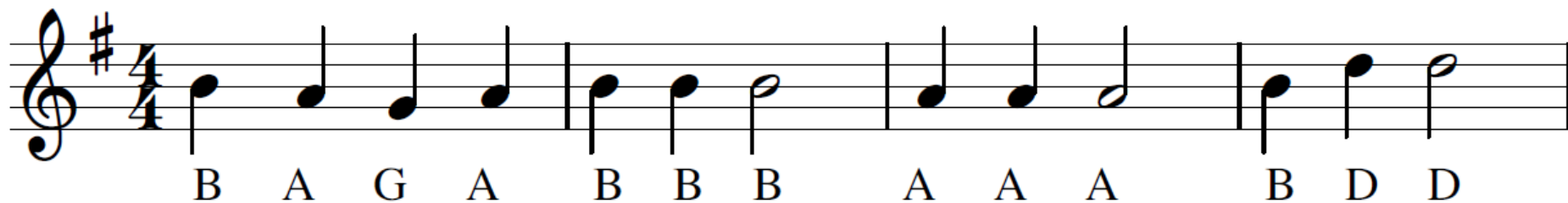
Musical notation for the first line of 'Merrily We Roll Along'. The staff is in treble clef, key of D major (one sharp), and 4/4 time. The notes are: B4 (quarter), A4 (quarter), G4 (quarter), A4 (quarter), B4 (quarter), B4 (quarter), B4 (quarter), A4 (quarter), A4 (quarter), A4 (quarter), B4 (quarter), B4 (quarter), B4 (quarter).

B A G A B B B A A A B B B

Musical notation for the second line of 'Merrily We Roll Along'. The staff is in treble clef, key of D major (one sharp), and 4/4 time. The notes are: B4 (quarter), A4 (quarter), G4 (quarter), A4 (quarter), B4 (quarter), B4 (quarter), B4 (quarter), A4 (quarter), A4 (quarter), B4 (quarter), A4 (quarter), G4 (half).

B A G A B B B A A B A G

# Mary Had a Little Lamb



# The Boat Song



# It's Raining

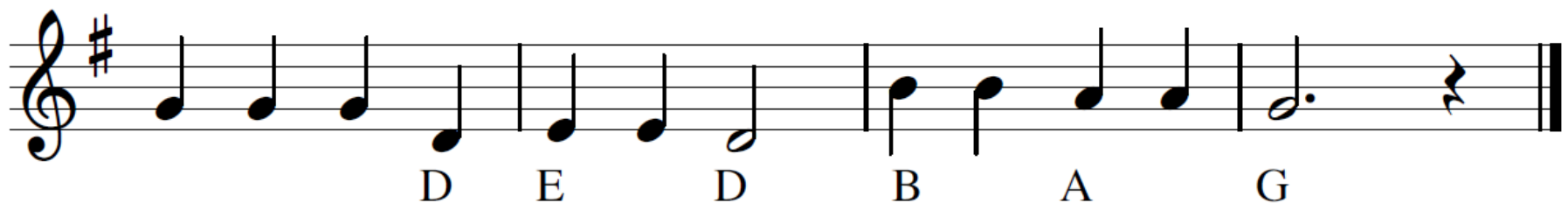
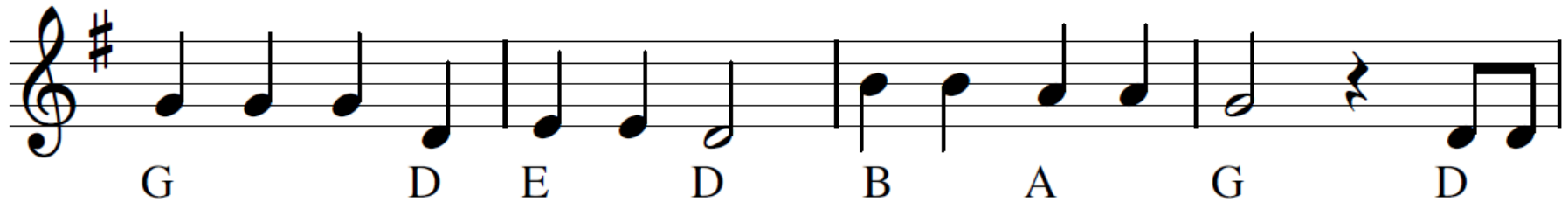
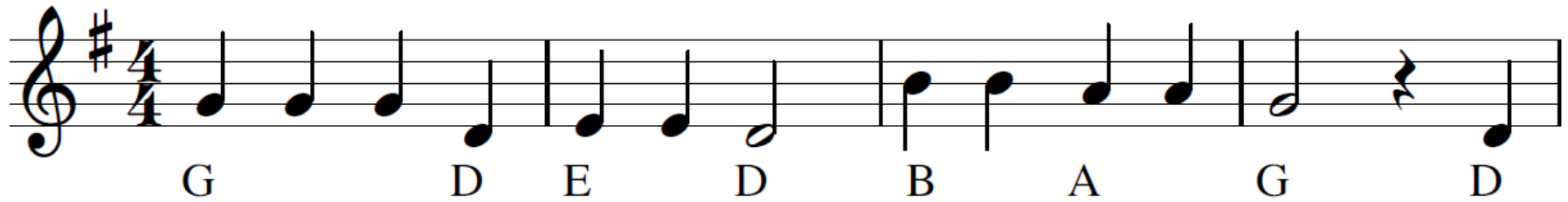
Musical notation for the first line of the song "It's Raining". The notation is in 4/4 time, using a treble clef. The melody consists of quarter notes on a G4-A4-B4-C5-G4-A4-B4-C5-G4-A4-B4-C5-G4 sequence. The notes are grouped into four measures: the first measure has G, the second has E and A, the third has G, and the fourth has E, G, E, A, G, and E.

G E A G E G E A G E

Musical notation for the second line of the song "It's Raining". The notation is in 4/4 time, using a treble clef. The melody consists of quarter notes on a G4-A4-B4-C5-G4-A4-B4-C5-G4-A4-B4-C5-G4 sequence. The notes are grouped into four measures: the first measure has G, the second has E and A, the third has G, and the fourth has E, A, G, and E.

G E A G E A G E A G E

# Old MacDonald Had A Farm



# When the Saints Go Marching In

G B C D G B C D G B C

D B G B A B A

G B D C B C

D B G A G

# Twinkle, Twinkle, Little Star

D A B A G F# E D

A G F# E A G F# E

D A B A G F# E D

# Happy Birthday

D E D G F# D E D A G D

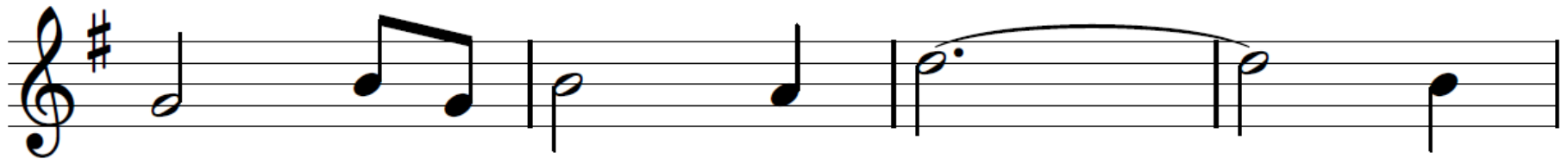
D B G F# E C B G A G




# Amazing Grace



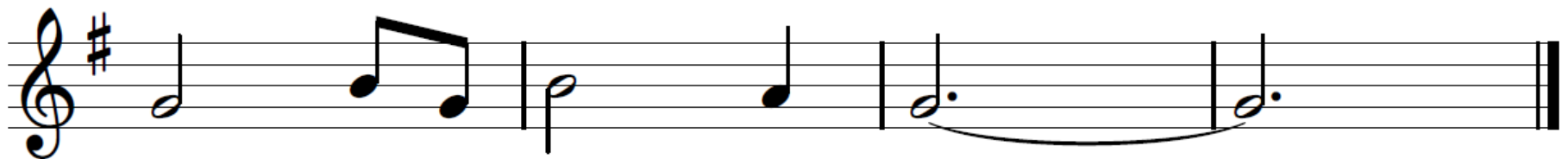
D G B G B A G E D



G B G B A D B



D B D B G D E G E D



G B G B A G

# Ode to Joy

B C D C B A G A B A

B C D C B A G A B A G

A B G A B C B G A B C B A G A D B

C D C B A G A B A G