

# A “Day in the Life Of” 4<sup>th</sup> and 5<sup>th</sup> Grade Students in the Hybrid Model

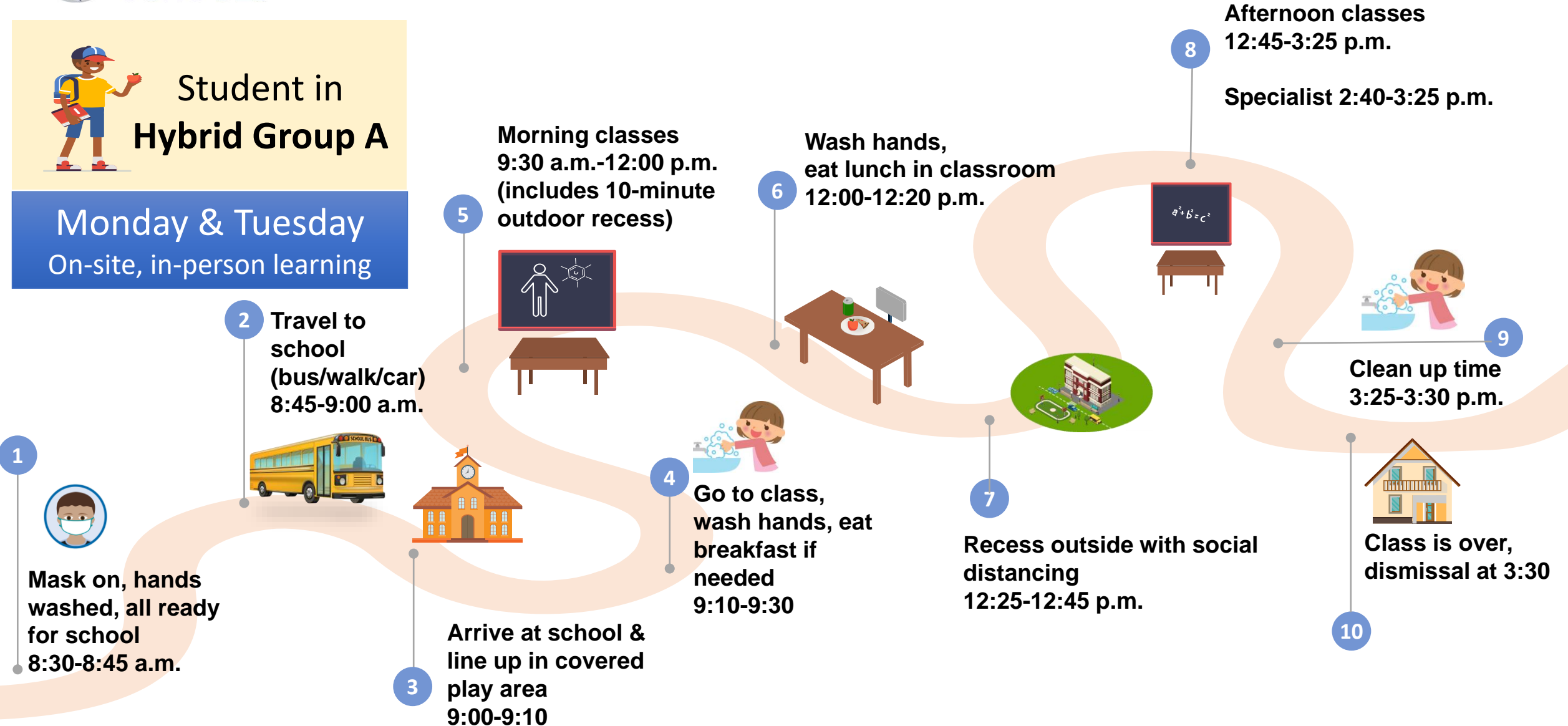
ILLUSTRATIVE

NOT EXHAUSTIVE



## Student in Hybrid Group A

Monday & Tuesday  
On-site, in-person learning



## A “Day in the Life Of” 4<sup>th</sup> and 5<sup>th</sup> Grade Students in the Hybrid Model



### Student in **Hybrid Group A**

*Follow the previous page  
on Monday and Tuesday.  
Follow the steps to the right on  
Wednesday, Thursday, and Friday.*

What is “teacher-directed  
independent learning time?”  
*This is the time on the days your child  
is not on site but still attending school  
from a distance. Your child will be  
working mostly independently, but  
there may be some Zoom times with a  
teacher, specialist, or staff member.*

### Wednesday

(both groups A and B have a.m. Zoom  
with teacher, then teacher-directed  
independent learning time)

- 1) Wake up and have breakfast, as always!
- 2) All students - log on to your computer at 9:15 and check Canvas for class meeting in Zoom.
- 3) Follow the learning plan outlined in Canvas or as given by your teacher, including your i-Ready lessons.

### Thursday and Friday

(Teacher-directed independent  
learning time)

- 1) Wake up and have breakfast, as always!
- 2) At 9:15 log in to your computer and go to your Canvas class page.
- 3) Follow the learning plan outlined in Canvas or as given by your teacher, including your i-Ready lessons.
- 4) Stop for lunch and a break mid-day.
- 5) Attend your specialist at 2:40.

# A “Day in the Life Of” 4<sup>th</sup> and 5<sup>th</sup> Grade Students in the Hybrid Model

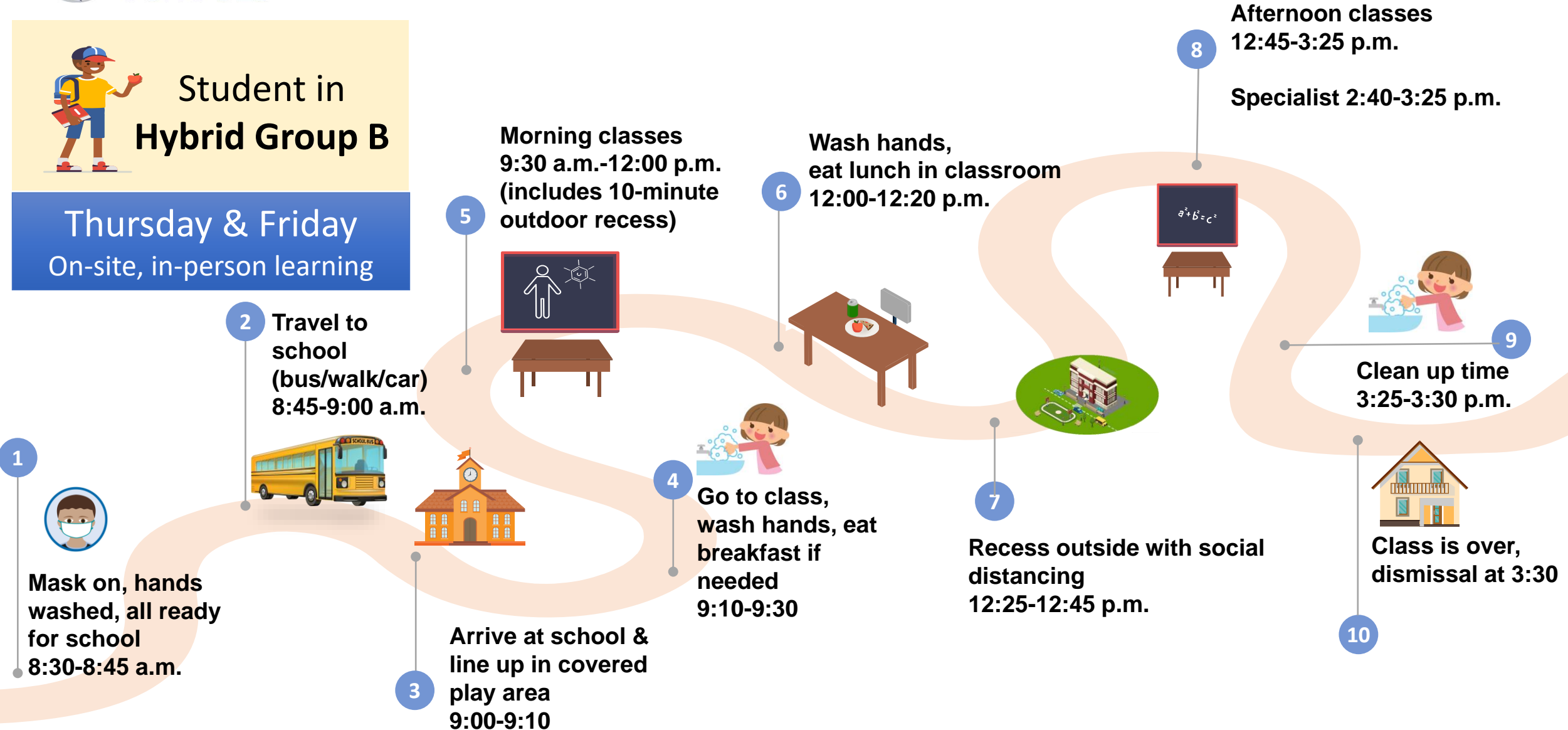
ILLUSTRATIVE

NOT EXHAUSTIVE



## Student in Hybrid Group B

Thursday & Friday  
On-site, in-person learning



## A “Day in the Life Of” 4<sup>th</sup> and 5<sup>th</sup> Grade Students in the Hybrid Model



### Student in **Hybrid Group B**

*Follow the steps to the right on  
Monday, Tuesday, and Wednesday.  
Follow the previous page  
on Thursday and Friday.*

What is “teacher-directed  
independent learning time?”  
*This is the time on the days your child  
is not on site but still attending school  
from a distance. Your child will be  
working mostly independently, but  
there may be some Zoom times with a  
teacher, specialist, or staff member.*

### **Monday and Tuesday** (Teacher-directed independent learning time)

- 1) Wake up and have breakfast, as always!
- 2) At 9:15 log in to your computer and go to your Canvas class page.
- 3) Follow the learning plan outlined in Canvas or as given by your teacher, including your i-Ready lessons.
- 4) Stop for lunch and a break mid-day.
- 5) Attend your specialist at 2:40.

### **Wednesday** (both groups A and B have a.m. Zoom with teacher, then teacher- directed independent learning time)

- 1) Wake up and have breakfast, as always!
- 2) All students - log on to your computer at 9:15 and check Canvas for class meeting in Zoom.
- 3) Follow the learning plan outlined in Canvas or as given by your teacher, including your i-Ready lessons.