



## From the principal

*We are all in this  
together*



I hope you and your family are settling into our new normal. Like you, my husband and I are doing our best to meet the needs of our two children as they experience school in a completely different way without in-person interactions with their friends and extended family.

As an Evergreen Staff, we are here to help your students through this time. If you need any assistance, please do not hesitate to reach out to us. We are developing lessons and learning experiences to ensure our students maintain their skills. If you have questions and/or if your student(s) need(s) help with their assignments, please have them email their teachers. You can also find information on teacher websites.

Please know that I, and our entire staff, miss your kids and the energy of being at school each day. We look forward to the day we go back to a full school building and the crazy, funny, awkward days of the middle school experience.

Sincerely,  
Michele Waddel

## A Special Message for YOU! We Miss Our EMS PACK!



[https://enscloud-my.sharepoint.com/:v/g/personal/07397\\_apps\\_everettsd\\_org/EY6Xq5i5Hw9KqfJ-zot3V\\_ABQanD8fputd68MUTDSU18PQ?e=obuFCL](https://enscloud-my.sharepoint.com/:v/g/personal/07397_apps_everettsd_org/EY6Xq5i5Hw9KqfJ-zot3V_ABQanD8fputd68MUTDSU18PQ?e=obuFCL)

## What is i-Ready?

i-Ready is an online program for reading and/or mathematics that helps your child's teacher(s) determine your child's needs, personalize their learning, and monitor progress throughout the school year. i-Ready allows your teacher(s) to meet your child exactly where they are and provides data to increase your child's learning gains. i-Ready consists of two parts: Diagnostic and Instruction. Please encourage your student to login to their i-Ready account every morning (M-F) during Independent Reading schedule, 10:00 – 10:45 a.m.

**Michele Waddel**  
Principal

**Kelly Bell**  
Assistant Principal

**Jacob Ellsworth**  
Assistant Principal

7621 Beverly Ln,  
Everett, WA 98203  
425 385-5700

### **May 1-29**

Emergency Meals continue for all children up to age 18. Meals are available for curbside pickup at EVERGREEN from 11:30 a.m. – 12:30 p.m.

School Buildings remain Closed  
All schools closed for remainder of 2019-20 school year.

**“Stay Home, Stay Healthy”**

We Miss Our Evergreen Wolfpack!

YOU ARE  
**Braver**  
THAN YOU BELIEVE,

**Stronger**  
THAN YOU THINK

&  
**More Loved**  
THAN YOU WILL EVER KNOW!





## How to access their student's online learning

### Reading Time Resources

AR=Accelerated Reading Books <https://www.everettsd.org/Page/7219>

**I-Ready Ready Resources** Log into I-Ready <https://www.everettsd.org/domain/2152>

To access **Canvas**, go to <https://www.everettsd.org/domain/2152> and select the Canvas tile. Then log in with your normal student log-in.)

To access a **Google Classroom**, go to <http://classroom.google.com> and login to class with the class code (codes are listed on teacher Evergreen Webpages)

**Technology Supports** for Families: <https://www.everettsd.org/Page/32723>

Communication will come out on a later date regarding retrieving materials from the building (PE clothes, instruments, yearbooks etc.) as well as turning in materials such as books and laptops.

## And the Outstanding Educator Award goes to.....

EMS PTA is proud to announce our award winner for this year!!

Outstanding Educator - **Courtney Deppa!**

The Outstanding Educator Award is given to recognize an individual who has gone above and beyond the normal expectations of their job to make the learning environment fun, beneficial, and challenging.

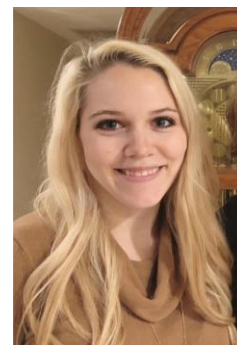
Here's what some of Mrs. Deppa's students had to say about her:

"I feel this person should receive the reward because she is a great teacher and explains tasks thoroughly and helps everybody in need"

"She is very committed to helping students truly understand subjects. She gives many opportunities to both be self-sustaining while finding help. Mrs. Deppa is also very amiable with her students while keeping it engaging. Overall, she is an excellent role model and educator for students of all methods of learning and backgrounds."

"Mrs. Deppa is incredibly supportive and determined in her helping and supporting of students with all different learning paces and backgrounds."

Thank you for all you do for the school and students!



## And the Golden Acorn goes to.....

### **Cindy Holmgren!**

The Golden Acorn Award is given to recognize a volunteer who has gone above and beyond in providing continued and dedicated service to Evergreen. Cindy has dedicated her years at EMS to helping provide support to teachers and staff to ensure that our students have what they need to learn. She also put together amazing carnivals so that our families could enjoy time outside of school! Thank you for all your hard work, Cindy.



## Parent Virtual Focus Group on May 11th @ 4:00pm- Evergreen's MTSS Team is seeking 5 parents

to provide input on the PAWS Behavior Matrix 2.0 for the 2020-2021 school year. To set clear expectations for student behavior in common areas around the school in 2018, our MTSS team created a behavior matrix focused on Purpose, Attitude, Wise Choices and Safety. After two years of teaching these expectations and holding students accountable, we are in the process of revising those



expectations to be clearer for students and families. We are seeking parents to meet with our team on a Zoom meeting to provide feedback on our latest draft. *If you would like to participate, please email Jacob Ellsworth at [jellsworth@everettsd.org](mailto:jellsworth@everettsd.org).*

## Schoolwide-staff read aloud-of a brand-new book The Unteachables by:

Gordan Korman.

We launched an Evergreen student body Canvas page that was automatically added to all students' dashboards. Our staff has been recording read aloud chapters of the new book The Unteachables by: Gordan Korman. Students can sit back, relax and listen to a grade level appropriate full length story by clicking the link on our student canvas page. New chapters will be released each week. Happy listening!

## School closure resources



Watch for all Coronavirus updates at [www.everettsd.org/COVID-19](http://www.everettsd.org/COVID-19).

## 3-D printers loaned to help support local health care systems

Everett Public Schools is grateful to be able to loan ten 3-D printers, through an agreement with Ignition Partners, to support manufacturing N95 masks, visors and other critical medical and safety equipment for our local health care systems. [Click for full article.](#)



## Frequently Asked Questions



Did you know we have an [FAQ page](#) on our district website? We actively add content as we develop answers that apply to our students, staff and community. If you do not see your question answered, there is also an '[Ask a Question](#)' form where you may submit your question. Hoping this is a helpful resource for all!



## Emergency meal schedule update

Go to [https://bit.ly/EPS\\_EmergencyMeals](https://bit.ly/EPS_EmergencyMeals) for schedule of locations and times.

Due to physical distancing standards, and for the safety of our staff, meals will no longer be delivered directly to homes.

How families can help:

- Please take advantage of curbside pickup and stay in your car
- Avoid socializing with other families
- Leave the school property immediately after receiving your meals
- If you do walk-up, stand six feet behind the family in front of you, only stand in line with people you live with
- Pick up your meals at a later time in the meal service
- Pick the meal option for your child
- Follow directions provided by Everett Public Schools staff



Thank you for your understanding as we make these necessary changes to keep everyone safe.

## Social & Emotional Health during school closure

The outbreak of coronavirus disease 2019 (COVID-19) may be stressful for people and communities. Fear and anxiety about a disease can be overwhelming and cause strong emotions in adults and children.

Everyone reacts differently to stressful situations. The emotional impact of an emergency on a person can depend on the person's characteristics and experiences, the social and economic circumstances of the person and their community, and the availability of local resources. People can become more distressed if they see repeated images or hear repeated reports about the outbreak in the media.

Children react, in part, on what they see from the adults around them. When parents and caregivers deal with the COVID-19 calmly and confidently, they can provide the best support for their children. Parents can be more reassuring to others around them, especially children, if they are better prepared.

Please visit the district's website for [links and resources](#) for social & emotional health.



## Kindergarten registration

During the current school closure, you can register for kindergarten online. Please visit the [registration page](#) on the district's website. If you have questions, please email the Early Learning Department at [EarlyLearning@everettsd.org](mailto:EarlyLearning@everettsd.org). Thank you!

## Teacher Appreciation Week

Since 1984, National PTA has designated one week in May as a special time to honor the men and women who lend their passion and skills to educating our children. This year, Teacher Appreciation Week is May 4 – 8, 2020.






## National School Nurse Day



National School Nurse Day, May 6, 2020, is a time to celebrate the specialty practice of school nursing. In 1972, the National Association of School Nurses (NASN) created National School Nurse Day to recognize school nurses and acknowledge their role in the educational setting. NASN applauds the contributions school nurses make every day to improve the health, safety, and academic success of all students.

The theme this year – School Nurses: Supporting Students in Times of Crisis – reinforces the changing times of 2020. This year, more than ever, all members of our school communities, school nurses included, have been required to take on unprecedented roles and adapt quickly to changes in their jobs. It is reflective of the significant roles school nurses have in the health care of their school communities to help make a healthier place for children and families to learn and grow during this crisis.



**EVERETT  
PUBLIC  
SCHOOLS**

3900 Broadway  
Everett, WA 98201  
425-385-4000  
www.everettsd.org

Everett Public Schools does not discriminate on the basis of sex, race, creed, religion, color, national origin, age, honorably discharged veteran or military status, sexual orientation including gender expression or identity, the presence of any sensory, mental, or physical disability, or the use of a trained dog guide or service animal by a person with a disability in its programs and activities and provides equal access to the Boy Scouts and other designated youth groups.

**Designated to handle inquiries about nondiscrimination policies are:**

- Affirmative Action Officer – Randi Seaberg, rseaberg@everettsd.org, 425-385-4104
- Title IX Officer – Mary O'Brien, MO'Brien@everettsd.org, 425-385-4106
- 504 Coordinator – Becky Ballbach, rballbach@everettsd.org, 425-385-4063
- ADA Coordinator – Becky Clifford, rclifford@everettsd.org, 425-385-5250